

KARWAD

Steel & Engineering Co.

ADVANCEMENT WITH QUALITY
(A Company Of Karwad Group)

AN ISO 9001:2015 & ISO 14001:2015 Certified Co.

MSME

सूक्ष्म, लघु एवं मध्यम उद्यम
MICRO, SMALL & MEDIUM ENTERPRISES
UDYAM-MH-19-0103770



Website: www.karwadgroup.com

Company Profile

KARWAD GROUP is one of the leading Manufacturers, Stockist & Supplier of all kinds of Stainless Steel, Carbon Steel & Alloy Steel products. We have set up our business empire since last One Decade serving many core industries all through out most satisfactorily.

We always strive to meet the exacting standards of quality for our products, which are as per accepted International standards. We supply better quality and better value for money to our customers using best quality control trained manpower coupled with cost effectiveness that will sustain our future growth .

Brands



Product Range

STAINLESS STEEL PIPES & TUBES

SEAMLESS, WELDED, ERW, EFW & ELECTROPOLISH

SPECIFICATION : ASTM A213, A249, A268, A269, A270, A271, A312, A358, A376, A409, A468.

GRADE : AISI TP304, TP304L, TP304H, TP310S, TP316H, TP 309, TP310, TP316TI, TP316, TP316L, TP317, TP317L, TP321, TP347, TP904L etc.

ELECTROPOLISH PIPES & TUBES

Range : 1/4" OD to 4" OD in thk 10 swg, 12 swg, 14 swg, 16 swg, 18 swg, 20swg.

GRADE : TP 316, TP316L, TP304, TP304L

OTHERS : Nickel & Nickel Alloys, Inconel, Monel, Hastelloy, Cupro-Nickel, Titanium, Duplex, Super Duplex etc.



Product Range



CARBON & ALLOYS STEEL PIPES & TUBES

SEAMLESS, WELDED, ERW & EFW

SPECIFICATION : ASTM A106 Gr. A & B, ASTM A53 Gr. A & B,
ASTM A333 GR.1, 6 & 3, API 5L Gr. B to API SL X80 etc.

GRADE : ASTM A335 GR. P1, P5, P11, P12, P22, API 5L GR. A & B BS 3059,
3601, 3602, 3603, 3604, 4360, DIN ST 33, 34-2, 35, 37.2, 42.3, 45, 52,
IS-1239 PART 1, IS 3589 API 5L X42 PSL1 & PSL2, API5L X46 PSL1
& PSL2, API 5LX52 PSL1 & PSL2, API5L X56 PSL1 & PSL2, API5L X60 PSL1 &
PSLI2, API 5L X65 APL1 & APL2, API SL X70 PSL1 & PSL2, API5L X80 PSL1
& PSL2 etc.

BUTT-WELD PIPE FITTINGS

**ELBOW, LONG BEND-R=3D, 5D, 10D, 12D, STRAIGHT TEE,
REDUCING TEE, REDUCER (CONCENTRIC, ECCENTRIC), LAP
JOINT STUBEND, SHORT STUBEND, END CAP ETC.**

RANGE : 1/2" (15MM) NB to 48" (1200 MM) NB

METHOD : SEAMLESS, ERW, WELDED (FORGED & FABRICATED)

DIMENSIONS : ANSI B 16.9 ANSI B 16.28, MSS-SP43, MSS-S P75,
BS 1640, DIN-2605 TO 2616

STAINLESS STEEL

ASTM - A - 403 WP 304, WP 304L, WP 304H, WP 309, WP 310, WP
316, WP 316L, WP 316 TI, WP 317, WP 317L, WP 321, WP 321 H,
WP 347H, 904L etc

CARBON & ALLOYS STEEL

ASTM A 234 GR. WPB, WP1, WP5, WP9, WP11, WP22 MSS SP75, WPHY
42 / 46 / 52 / 56 / 60 / 65 / 70.

CARBON & STEEL (LOW-TEMPERATURE) ASTM A 420 GR. WPL6, WPL9

OTHERS : Nickel & Nickel Alloys, Inconel, Monel, Hastelloy, Cupro-Nickel,
Titanium, Duplex, Super Duplex etc.



SCREWED / FORGED PIPE FITTINGS

**ELBOW, TEE, REDUCING TEE, COUPLING, HALF COUPLING, END,
CAP, REDUCING COUPLING, BARREL NIPPLE, HEXAGONAL
NIPPLE, HAXAGONAL BUSH, HEXAGONAL HEAD PLUG,
SOCKOLET, WELDOLET, THREDOLET, ELBOLET, NIPPOLET ETC.**

RANGE : 1/4" (6 MM) NB to 4" (100 MM) NB METHOD FORGED

RATING : CLASS # 1000, 2000, 3000, 6000, 9000.

DIMENSIONS : ANSI B16. 11, MSS-SP79, BS3799, DIN-2950,
EN-10241, EN-10242, IS 1239 PART II

STAINLESS STEEL

ASTM A 182 F 304, F 304L, F 304H, F 309, F 310, F 316, F 316L,
F 316 TI, F 317, F 317L, F 321, F 347

CARBON STEEL

ASTM A 105, ASTM A 350 LF2, ASTM A 181

ALLOY STEEL : ASTM A 182 F1, F11, F22, F5, F9

OTHERS : Nickel & Nickel Alloys, Inconel, Monel, Hastelloy,
Cupro-Nickel, Titanium, Duplex, Super Duplex etc.

Product Range

FLANGES

SLIPON (SORF), SOCKETWELD (SWRF), BLIND (BLRF),
WELDNECK (WNRF), SCREWED (SERF), LAPPED (LJFF),
WELDNECK RING JOINT (WNRTJ)

RANGE : FORGED FLANGES: 1/2" (15 MM) NB to 24" (600 MM) NB

PLATE FLANGES : 1/2" (15 MM) NB to 48" (1200 mm) NB

DIMENSIONS :-

ANSI B16.5 & BS1560 : CLASS 150 #, 300 #, 600 #, 900 #, 1500 #

DIN : 2527, 2573, 2576, 2633, 2634, 2635, ND-6, ND-10, ND-16, ND-40

BS10 : TABLE D, E, F, H, J,

BS4504 : Table ND-6, ND-10, ND-16, ND-25, ND-40

IS6392 : TABLE 5, 11, 17, IS 1538, MSS-SP44

STAINLESS STEEL

ASTM A 182 F 304, F 304L, F 304H, F 309, F 310, F 316, F 316L,

F 316 TI, F 317, F 317L, F 321, F 347,

ALSO IN PLATE ASTM A 240 TP 304, 304L, 316, 316L, 317, 317L

CARBON STEEL & ALLOY STEEL

ASTM A 105, ASTM A 182 F5, F9, F11, F22, ASTM A 350 LF1, LF2,

LF5 ALSO IN PLATE IS-2062, GR. A, B, C, ASTM A 516 GR. 60

GR. 70 SOCKET WELD & THREADED

OTHERS : Nickel & Nickel Alloys, Inconel, Monel, Hastelloy,
Cupro-Nickel, Titanium, Duplex, Super Duplex etc



DAIRY & SANITARY TUBE FITTINGS

USED FOR DAIRY, BIO-PHARMA & FOOD INDUSTRY (WELDED
ENDS / EXPANDED ENDS) BEND, TEE, CROSS, REDUCER,
UNION, VALVE CLAMP WITH FERRULE, CLAMP (PIPE HOLDING)
WITH COUPLING, NIPPLE & BASE PLATE

RANGE : 1/2" (15 MM) OD to 12" (300 MM) THK OD 16swg, 14swg, 12swg

GRADE : AISI 304, 316, 316L.

STANDARD : SMS, IDF, DIN, ISO, ASME BPE etc.

FINISH : ELECTRO POLISHED / MIRROR / MATT FINISH

T.C FITTINGS / BIO- PHARMACEUTICAL FITTINGS

TC BEND, TC TEE, TC REDUCER, TC UNION, TC CLAMPS,
TC LINER (FERRULES), TRI-CLOVER STANDARD FITTINGS IS WIDELY
USED IN PHARMACEUTICALS & FOOD INDUSTRIES FOR ITS EASILY
OPENING & CLEANING FACILITIES. IT CONSISTS OF TWO LINERS
(FERRULES) & CLAMPS WHICH HOLDS BOTH THE LINES TOGETHER.
GASKET IS HOUSED BETWEEN THE LINES TO GIVE LEAK PROOF
SEALING.

RANGE : ½" (15MM) to 12" (300MM) (SUITABLE FOR OD & NB SIZE PIPE)

GRADE : AISI 304, 316, 316L

STANDARD : ISO, ASME BPE Standard.

FINISH POLISHED : ELECTRO POLISHED / MIRROR / MATT FINISH



Product Range

SHEET, PLATE & COIL

Sheets :

Material Grade : Stainless Steel, Nickel Alloys, Carbon Steel, Alloy Steel, Other Ferrous & Non-Ferrous Metals.

Thickness : 0.25mm & above

Width : 6mm ~ 2000mm

Length : 1000mm ~ 1000mm

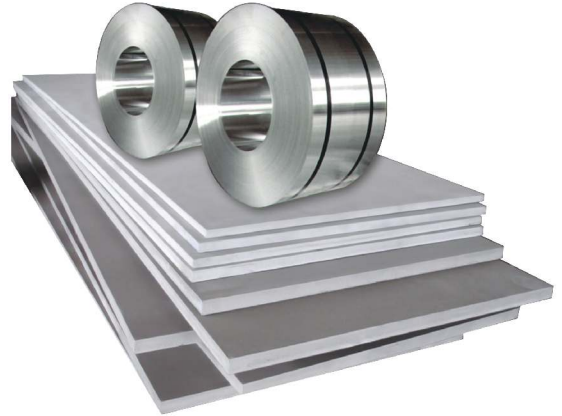
Plates :

Material Grade : Stainless Steel, Nickel Alloys, Carbon Steel, Alloy Steel, Other Ferrous & Non-Ferrous Metals.

Thickness : 3mm & above

Width : 1000mm to 3200mm

Length : 2438mm/3048mm/6096mm to 13500mm



ROUND BARS

Stainless Steel Bar : ASTM A-479, A 182 F 304/304H/304L, 316/316L/316Ti, 309, 310, 317L, 321, 347, 409, 410, 420, 430, 440 (A, B, C) 446, 904L, etc. SUPER 13 CR, 420 MOD, TOUGHMET 3AT 110

Duplex Steel Bar : A 182 F51, F53, F55

Carbon Steel Bar : A 105, LF2, 4140 MOD, 4340 MOD

Alloy Steel Bar : ASTM A -182 F11, F12, F22, FF5, F9, F91

Cu-Ni Bar : C70660 (90:10) C71500 (70:30), C71640

Nickel Bar : UNS N02200, N02201

Monel Bar : UNS N04400, N05500

Inconel Bar : UNS N06600, N06601, N06625, N08800, N08810, UNS N08825, UNSN09925, UNS N07718

Types : Round, Square, Hex (A/F), Rectangle



ANGLE / CHANNEL / FLAT BAR

Stainless Steel : 304/304L, 316/316L/316Ti, 321, 310/310S, 317/317L, 347, 17-4Ph, 15-5Ph, 904L, 410, 420, 430, 431, 430F, 416, 440C etc. Copper, Brass, Aluminium, Hast Alloy, Titanium, Monel, Inconel, Nickel, etc.

Duplex Steel : UNS 31803, UNS32205, UNS 32750, UNS 32760

Alloy Steel : F5, F9, F11, F22, F91.

Carbon Steel, Mild Steel, (EN Series)

Specification : ASTM, AISI, ASME, DIN, UNS etc.



Sizes of Angles :

- 20mm to 150mm, in Thk = 3mm to 12mm

Sizes of Channels :

- 20mm to 500mm, in Thk = 3mm to 50mm

VALVES

TYPES : Gate Valve, Ball Valve, Globe Valve, Butterfly Valve, Check Valve, Cryogenic Valve

GRADES : WCB, WC1, WC6, WC9, LCB, LCC, LC3, C5, C12, CF8, CF8M, CF3, CF3M, CF8C, CN7M, CD4MCu, Hastelloy, Inconel, 304L, 316L, 2205, 2507 etc.

MATERIAL : Stainless Steel / Duplex / Super Duplex / Nickel Alloy / Carbon Steel / Alloy Steel

CLASS : 150#, 300#, 600#, 800#, 900#, 1500# & 2500#.



FASTENERS

Products

BOLT, SCREW, NUTS & WASHERS

TYPE

GRADES & SPECIFICATIONS

NICKEL ALLOY FASTENERS

Standard : ASTM / ASME SB 160 / 164 / 425 / 166 / 446 / 574 / 472

Grade : UNS 2200(NICKEL 200) / UNS 2201 (NICKEL 201).
UNS 4400(MONEL 400), UNS 8825(INCONEL 825).
UNS 6600(INCONEL600), UNS 6601(INCONEL 601),
UNS 6625(INCONEL625), UNS 10276 (HASTEELLOY C 276).UNS 8020 (ALLOY 20/20 CNB 3)

STAINLESS STEEL FASTENERS

Standard : ASTM / ASME A / SA 193 / 194

Grade : B8 (304), B 8C (SS 347), B 8M (SS 316), B 8T (SS 321), A2, A4

HIGH TENSILE FASTENER

- Longer Serviceability
- Superior Polish
- Precise Dimension
- Standard & Customized Shapes

ALLOY STEEL FASTENERS

Standard : ASTM / ASME A / SA 193 / 194 Gr.

Grade : B6, B7/B7M, B16, 2, 2HM, 2H, GR 6,B7, B7M

DUPLEX STEEL

UNS NO. S 31803, S 32205.



Application

Industries

- OIL & GAS INDUSTRIES
- PHARMA-CEUTICAL
- SUGAR INDUSTRIES
- PAPER & PULP
- STEEL & POWER
- CHEMICAL INDUSTRIES
- CEMENT INDUSTRIES
- PAPER & PULP
- REFINERIES
- PETRO-CHEMICAL
- AUTOMOBILE
- ENGINEERING
- FERTILIZERS
- BEVERAGE INDUSTRIES
- SHIP BUILDING
- FIRE FALLING SYSTEMS



KARWAD
Steel & Engineering Co.

ADVANCEMENT WITH QUALITY
(A Company Of Karwad Group)

AN ISO 9001:2015 & ISO 14001:2015 Certified Co.

KARWAD
GROUP

ADVANCEMENT WITH QUALITY

Manufacturers & Suppliers Of : Pipes, Tubes, Pipe Fittings, Valves, Gaskets, Fasteners And All Piping Raw Materials.

Proprietor / Director : Mr D V Patel

35, Goenka Bhavan, Office No 7, Ground Floor,
Dr. MG Mahimtura Marg, 3rd Kumbharwada,
Mumbai - 400 004

Mob.: +91 90295 16529

Mob. : +91 85915 99607

Tel No: 022 - 67437274

Email: dvpatel@karwadgroup.com

Email: sales@karwadgroup.com

Email: export@karwadgroup.com

Website: www.karwadgroup.com